

Mpls
St Paul
MAGAZINE

Home

YOUR
GUIDE
TO
LOCAL
DESIGN

OCTOBER 2011 | MSPMAG.COM

Mix It Up!

HOW THE
PROS PLAY
WITH
COLOR +
PATTERN



A NEW
LOOK FOR
WALLPAPER

8 AWARD-
WINNING
KITCHENS +
BATHS

RENOVATING
MAGIC: MAKE
MODERN WARM

Design showroom owners

**Fritz & Brenda
Westphal**

at their family home

FIRST PLACE

LARGE KITCHEN
(MORE THAN 350 SQ. FT.)**► DESIGNER**

David Heide, David Heide Design Studio, Minneapolis, 612-337-5060

► DETAILS

The kitchen is designed as the anchor to this open-plan Minneapolis condo, complete with views of the Mississippi River and downtown skyline. The use of a cool, silver blue and warm brown color palette—plus materials such as glass, stainless steel and dark wood—pay homage to the river and surrounding industrial environment.

► OTHER WINNERS

The Woodshop of Avon Inc., Edina; The Kitchenplan Company, Shoreview

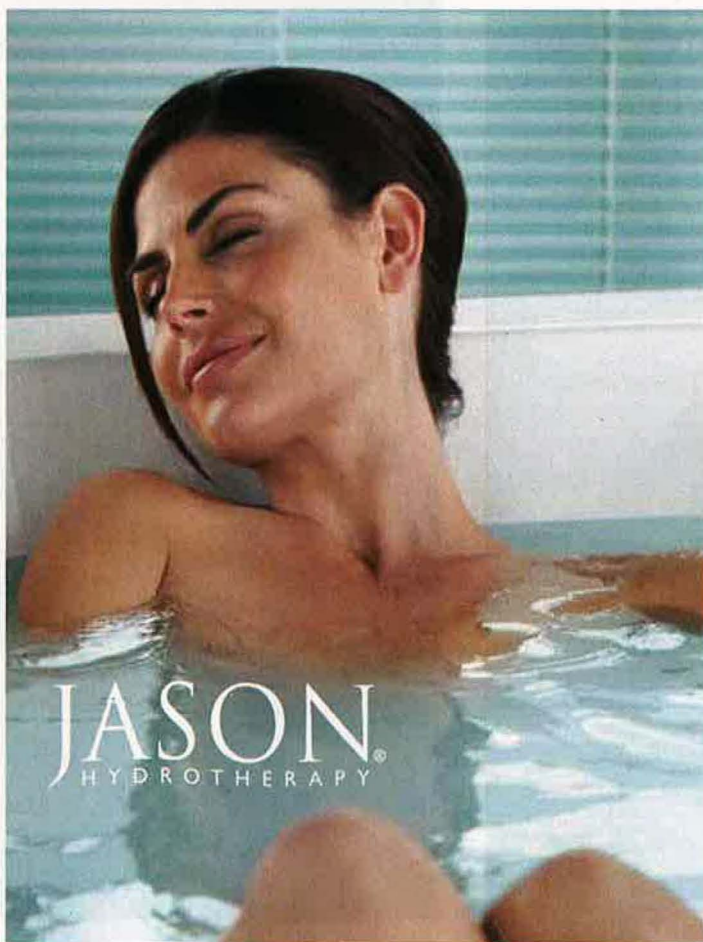
**MICROSILK™**Some call it the
Fountain of Youth

The new MicroSilk™ Hydrotherapy from Jason International, Inc. produces a luxurious cloud of oxygen-rich microbubbles that enter pores, plump the skin and reduce fine lines and wrinkles.

Pipeline Supply Inc.
620 16th Avenue South
Hopkins, MN 55343
Phone: (952) 988-5550
www.pipeline-showroom.com

PIPELINE
DESIGN SHOWROOM

Visit our showroom and experience what no one else has to offer!



FIRST PLACE

SMALL KITCHEN

(LESS THAN 150 SQ. FT.)

► DESIGNER

David Heide, David Heide Design Studio, Minneapolis, 612-337-5060

► DETAILS

This kitchen remodel aimed to restore the charm of the home while retaining functionality. Also, the homeowner desired a green approach, so a lot of materials were upcycled: the wood floors were refinished, windows were repaired, and old cabinets were reused. New cabinetry was constructed from local wood.

► OTHER WINNERS

Sawhill Custom Kitchen & Design Inc., Minneapolis; The Woodshop of Avon Inc., Edina



FIRST PLACE

UTILIZATION OF CABINETRY

► DESIGNER

Lynne Stryker, Spaces Into Places Inc., St. Paul, 651-699-1050

► DETAILS

Cabinets in this home office were customized for a built-in look, but remain free standing, should the homeowner decide to relocate the business. The resulting open-toed cabinets still reflect the Art Deco influence of the 1930s home, complete with black and white tiles in the door panels and coordinating yet whimsical knobs.

► OTHER WINNER

Crystal Kitchen Center, Crystal