

This Old House

38
MONEY-SAVING
SECRETS
FROM THE
PROS
p. 74

Cottage Charm

INDOORS
AND OUT

CUTE VICTORIAN HIDEAWAY

LIGHT, BRIGHT BUNGALOW

FAMILY-FRIENDLY COLONIAL

GROW
AN
easy-care
garden

APRIL 2015 | THISOLDHOUSE.COM

17 COLOR SPRUCE-UPS
TO BRIGHTEN YOUR HOME

#BXNGFYN *****GRR-RT 101**C-093
#2408 0942 210# TH 006 MAR16
FE4 10LN6 APR15 0029 #1046 #187283*
DAVID HEIDE
301 4TH AVE S
MINNEAPOLIS MN 55415-1015

Vintage look, modern function

A contemporary kitchen gets a gut redo—and a turn-back-the-clock style that suits both a 1907 home and a 21st-century family BY AMANDA LECKY + PHOTOGRAPHS BY KAREN MELVIN

➔ **RENOVATING** typically means bringing a kitchen into the now. But in this case, the goal was to go back in time—at least on the surface. “The homeowners loved everything about their 1907 Craftsman home, except for the kitchen,” says Minneapolis-based designer David Heide. In a house full of mahogany woodwork and art glass, the 1980s “update” with a partial drop ceiling and orange walls stuck out like a sore thumb.

As did the oversize peninsula that protruded into the room. Add in a couple of awkwardly placed appliances—including a cooktop set into the peninsula breakfast bar—and the problems multiplied. To open up the space and reintroduce the room to its past, Heide rejiggered the layout and installed red-birch cabinets, open shelving, leaded-art-glass panels, and other Craftsman nods, working with builders Next Level Renovation. “The design integrates state-of-the-art amenities with the timeless spirit of the house,” says Heide. “Just as important, it makes use of every square inch.”

BEFORE Black countertops and lots of can lights made the space feel cold; a big peninsula hemmed in the cook. **AFTER** A compact island provides a gathering place and an uncluttered work surface for meal prep—and mother-daughter baking. Honed-granite counters, red-birch cabinets, and a slate floor evoke a Craftsman look. Outlets hide in the undersides of upper cabinets.





PRODUCED BY COLETTE SCHMIDT
STYLING: DAVID ANGER

before + after:
kitchen



The butler's-pantry side of the passageway between the kitchen and the dining room offers wine storage, a wet bar, and a second dishwasher to ease entertaining.

before

A large peninsula trapped the cook. Curved cabinets and a partial drop ceiling gave the space a contemporary look.

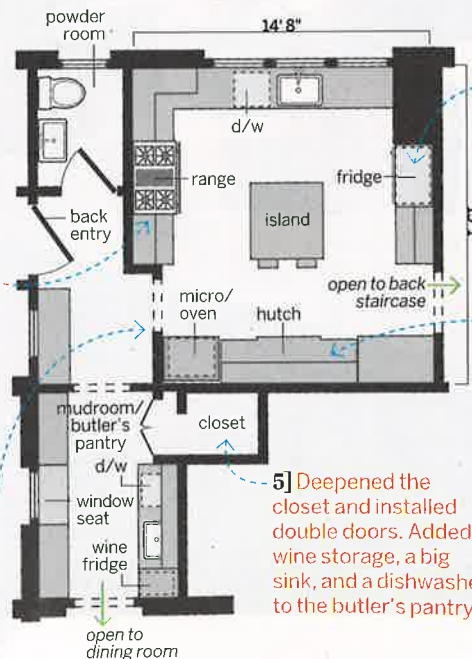


after

An island with seating, burners in a safer spot, and to-the-ceiling storage make the kitchen more functional and inviting.

1] Traded the peninsula-cooktop combo for a range and a freestanding island, creating a new spot for casual meals.

2] Removed curved cabinets and added cased openings to define the kitchen and adjacent spaces.



3] Moved the fridge and dishwasher to triangulate with the island.

4] Maximized storage with a built-in hutch with a ceiling-high row of cupboards, stacked ovens, and a pantry cabinet.

5] Deepened the closet and installed double doors. Added wine storage, a big sink, and a dishwasher to the butler's pantry.

Removing a partial drop ceiling allowed for taller doorways topped with leaded-glass transoms that usher more light through the kitchen. An art-glass window in the mudroom area is on view from the kitchen, too; it looks out onto an enclosed porch.

Handcrafted leaded-glass cabinet door panels show off dishware and reflect light back into the space. *Leaded glass: David Heide Design Studio*



SHARE YOUR REMODEL



Enter your kitchen redo in our America's Best Remodel contest for a chance to appear in our October issue. Scan this page with the Blippar app or go to thisoldhouse.com/yourTOH



pro advice DAVID HEIDE, DESIGNER, MINNEAPOLIS

“Stone countertops may be modern but can evoke a period feel. Choose them first. They’re like art—you can then pick everything else to complement them.”



The built-in clock, a signature of the designer's, adds period flair. The backsplash tile was custom-glazed to match a vein in the granite counters. *Backsplash tile: Revival*

A window seat is tucked between built-in closets in the mudroom area opposite the butler's pantry.



Cutouts in the sink cabinet were inspired by decorative patterns found in houses of this period. *Custom cabinetry: Alpine Woodworking*