

10 Editor's Letter

12 Letters

14 UpFront

14 News & People
FLW "System-Built House" restoration.

16 Events
Tile lore in Pasadena; an Olmsted day trip.

18 Our House
A lot of TLC shines up a Sacramento bungalow long in the family.

22 Art + Craft
Reproduction wicker lamps, Voysey seagulls, jardinière.

27 Utility Spaces
Interpretive bathrooms by architect David Heide.

30 Bringing It Back
John Crosby Freeman on classic color schemes.

54 Architecture
Various cladding materials define the period.

56 ARTS & CRAFTS
expo

Big projects: architects and plans, millwork, roofing.

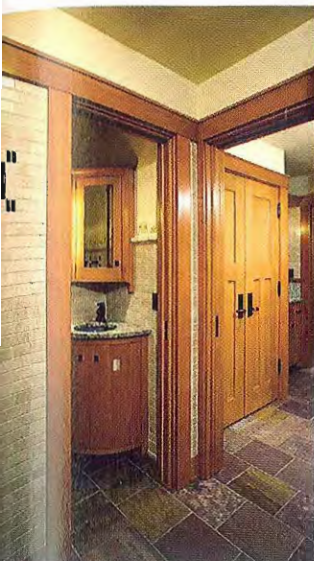
63 Calendar | Footnotes

64 Advertiser Index

68 Revival Market

27





ABOVE: In the family bath, iridescent glass in the hall door and used as accents in the cabinet echo the glass in lighting fixtures elsewhere in the house; this tile is from Ann Sacks. LEFT: The small powder room is part of a practical first-floor service area; just beyond is the laundry.

interpretive BATHROOMS

What's compelling about these bathrooms in two homes, all designed by Minneapolis architect David Heide, is that they are so different, yet recognizably Arts & Crafts in spirit. BY PATRICIA POORE

NEW CONSTRUCTION: These three rooms are in a northern Minnesota lake cottage that's filled with thoughtful details. In reference to the warm interiors and wood-working of Pasadena architects Greene and Greene, a Western A&C aesthetic prevails. Careful millwork details, stenciling, custom tile, and light fixtures were designed by architect David Heide and DHD Studio.

In the public areas of the new house, large windows and high ceilings create an open feel. Carefully chosen finishes give the bedrooms and bathrooms a more intimate quality. In the master bathroom, slate mosaics on the floor and custom-colored wall tile play harmony to the verde marble countertop, all in a green complement to the wood tones. In the tiny powder room near the laundry, a rounded sink cabinet in the corner makes good use of space. Tile here, including the deco heron, is from North Prairie Tileworks. The pebbly floor in the family bathroom upstairs is a delight for bare feet. Warmed by radiant heat installed beneath, the surface has a softly rounded texture. River-washed stones form tiles, backed by mesh, from Island Stone. Hardware and fittings are from Rocky Mountain Hardware.

The master bath has custom details. Note the backsplash rising into the mirror to accommodate the wall-mounted faucet.



An under-mount tub from Sunrise Specialty extends from a wall of built-ins that provides elegant storage—and hidden, bottom-hinged hampers, one for laundry and the other for dry-cleaning.

In the tub area, decorative moldings around the mirror allude to a Jacobean plaster relief ceiling in the living room.

the company

ARCHITECT

David Heide, **David Heide Design Studio**, Minneapolis, MN: (612) 337-5060, dhdstudio.com

the details

CUSTOM TILE

North Prairie Tileworks, Minneapolis, MN: (612) 871-3421, handmadetile.com [p. 27, left]

Ann Sacks: (800) 278-8453, annsacks.com [p. 27, top right]

Artistic Tile: (877) 528-5401, artistictile.com [slate tiles]

Original Style: (843) 681-4034, tile-source.com [p. 28]

WALL STENCIL

Trimbelle River Studio, Ellsworth, WI: (715) 273-4844, trimbelleriver.com

HARDWARE Rocky Mountain

Hardware: rockymountainhardware.com [p. 27]

GLASS SHADES

Arroyo Craftsman: arroyo-craftsman.com [p. 27]

Lundberg Studios: lundbergstudios.com [p. 29]

LIGHT FIXTURES Hudson

Valley: hudsonvalleylighting.com [p. 29]

TOWEL BARS Ginger Co.:

gingerco.com [p. 29]

SINKS Kohler:

kohler.com

PEBBLE FLOOR TILE Island

Stone: islandstone.com

RED FLOOR TILE BCIA/Ken

Mason: kmt-bcia.com

STOOL Century Furniture:

centuryfurniture.com

fabric by **Lee Jofa**: leejofa.com

TUB Sunrise Specialty:

sunrisespecialty.com

For marble specs, see p. 63.



LEFT: The vanity and sinks, which lie just outside the bedroom door, are luxuriously appointed with marble and fine woodwork details. The mirror is set into the marble panel by use of a flexible rubber gasket, faux-painted to match the stone. BELOW: The larger bathroom alcove containing the tub leads to the bedroom corridor, where the vanity tucks in.

RENOVATION: The ivory-painted bathroom, more in an English Arts & Crafts mode, was built during the restoration and renovation of a historic Minneapolis building being adapted for condominium units. Although a 1970s remodeling had removed original details, sleuthing at the site and additional research allowed the architects to re-establish its period look.

Because of the conversion, the floor plan has been updated. The layout of the master suite benefited from that, as it encouraged dividing the bathroom from the dressing area for comfort and simultaneous use. Double sinks and a mirrored vanity are in a well-lit hall that connects the bedroom with an alcove; the alcove opens to accommodate bathtub, built-ins with hidden hampers, and toilet. In the tub area, decorative moldings around the mirror allude to a Jacobean plaster relief ceiling in the living room. The building is Tudoresque.

In both houses shown, design is period-inspired but modern and interpretive. Rooms share a comfortable “zoning,” with fixtures well placed for different uses—a recurrent theme in this architect’s user-friendly kitchens and bathrooms. ◊

