



# Handcrafted Haven

ARCHITECTS JOIN FORCES WITH ARTISANS TO CREATE A CRAFTSMAN-STYLE LAKEFRONT RETREAT THAT'S RICH IN HISTORICAL DETAILS YET SHAPED BY MODERN SENSIBILITIES.

Writer **Brian Kramer** Photographer **Kim Cornellison** Field editor **David Anger**





For more than half a century, a rather unremarkable cottage on Pelican Lake in northern Minnesota had suited its family well. But as the family's children began to have children of their own, the tiny, dated vacation home begged for more than a mere addition or renovation—it needed to be completely reimagined.

Timeless style, excellent craftsmanship, and an abundance of versatile spaces were the homeowners' main requirements to ensure the cottage would serve their needs for generations to come. Plus, the new structure had to mesh with other lakefront structures, a mix of tiny cabins from the 1920s through 1950s, as well as larger, more recent homes. "Pelican Lake is still filled with ma-and-pa, cabin-at-the-lake sort of people," says designer David Heide, who along with a team of architects, designers, and artisans developed this Art and Crafts-inspired retreat on a site where Northern forest meets prairie.

At just over 3,500 square feet, the stone and cedar-shingle home is about quality, not size. "The family wanted a simple, humble cottage—but with amazing details," Heide

says. Collaborating with structural architect Mark Nelson, Heide concentrated on designing a modern floor plan that worked with the cottage's established foundation and then filling the space with natural materials and carefully crafted details.

To celebrate the home's surroundings and satisfy the homeowners' aesthetics, Heide drew inspiration from classic California homes built by brothers Charles and Henry Greene from 1903 to 1909. Their homes embody the Arts and Crafts style, with handmade detailing and respect for materials.

The Greene brothers' most profound influence on the project, however, may be the idea of construction as a decorative element: Rafters, joists, beams, and braces

ABOVE A trio of Adirondack chairs makes the narrow beach an ideal spot to enjoy a book or beverage while taking in views of Pelican Lake. OPPOSITE Echoing the classic Craftsman spirit from 100 years earlier, the home features heavy roofs with substantial overhangs and a wealth of windows to enhance the connection to the wooded landscape.





## HIGHLIGHT THE STRUCTURE

No matter your style, consider using structural elements to enliven your home's architecture. In this Arts and Crafts retreat, post-and-beam framework with exquisite joinery creates a handsome, handcrafted aesthetic.



are revealed rather than hidden behind plaster or drywall. Joinery—the simple connection of wood against wood, notable in the pegged construction of the exposed framing—forms a strong structural bond and makes a powerful visual statement.

Though history inspired every inch of it, the cottage never feels or functions like a trip to a museum. The layout of the casual main level flows freely. The petite entryway connects directly to an L-shape kitchen, which leads to the sunny dining room and then on to the welcoming great-room or informal screen porch. This openness requires detailed finishes. Thus, the kitchen features the same custom built-ins that Heide's colleague, Brad Belka, designed for the rest of the home, plus expansive windows and exceptional finishing details, such as handmade tile and hammered-copper accents.

Beautiful, yes, but like the rest of the home extremely functional. Heide cites late-19th-century Arts and Crafts

furnituremaker and artist William Morris' oft-quoted edict "Have nothing in your house that you do not know to be useful, or believe to be beautiful" as the text his design team returned to again and again. "Everything had to function well," Heide says. "We spent nearly two years discussing how each element was going to be used. Once function was determined, then we moved on to decorating it." Even embellishments were tempered by practical demands. "The family needed to be able to trudge in from the lake with sandy feet and not have concern for the furnishings," Heide says. "While designing, we frequently found ourselves asking

ABOVE LEFT Embellished with built-in lighting and bookcases, the wood staircase leads from the great-room to an airy upper level.

ABOVE RIGHT Fir beams with softly curved ends and oak pegs add subtle contrast and Craftsman charm to the exposed joinery.

OPPOSITE A sandstone-slab hearth built into the great-room's fieldstone fireplace has the appearance of century-old craftsmanship.





## ADD CHARACTER WITH LIGHTING

Light fixtures play a key role in establishing your home's architectural style. The right chandeliers and sconces offer timeless beauty, but consider an engaging application—such as a grouping of pendants—for a less expected look.



"Can I sit on this with a wet swimsuit?" (As a result, nearly every horizontal surface in the house is topped with tile or stone.) Other livable touches include built-in chalkboards and corkboards on the kitchen cabinets, heated stone floors, and a stereo system masked by a cloth frieze that wraps the perimeter of the great-room.

To unify the cottage, the designers established a small palette of finishing materials that were installed with expert craftsmanship and subtle variation. Heide selected vertical-grain fir as the predominant natural material—appearing in beams, posts, cabinetry, trim, and some furnishings. "The homeowners wanted the dings and scrapes that come from use. Fir has a natural softness that ages beautifully, darkening and growing in richness over time," he says. All fir elements were installed raw and finished on-site. Chemical pigments colored the wood, which was then filled and topped with several layers of tinted shellac for a finish that will last decades.

Slate flooring with plum and golden tones runs throughout the main level (except for a deeply padded carpet area in front of the great-room fireplace). The flooring functions as a rich background laid in an unassuming running-bond pattern. "The slate is beautiful," Heide says, "but not the star of the show. It lets the wood be the star." Granite countertops in the kitchen and bathrooms, along with dry-fit fieldstone on the central fireplace, provide contrasting touches of organic texture.

The Arts and Crafts tradition reveres local resources, and artisans, along with Heide and his team, particularly

OPPOSITE A simple bamboo dining set provides an exotic but appropriate accent in the light-filled, close-to-nature dining room. ABOVE LEFT A cluster of pendant lights drops down from a fir armature as a Craftsman-inspired take on the traditional dining room chandelier. ABOVE The screen porch connects to both the dining room and the great-room for seamless indoor-outdoor living during warm months.



## INTRODUCE LAYERS OF CHARM

Opportunities to underscore an architectural style exist in every room. Chief among them is the kitchen, where you can customize such functional elements as light fixtures, hardware, cabinets—even range hoods—with beautiful results.



interior designer Michael Crull, worked diligently to include as many local influences as possible. With full support of the homeowners, Heide commissioned Midwestern artisans to create beautiful, functional finishing elements throughout the home, including custom ironwork, tile, stencils, and furniture.

A local shop constructed the cabinetry in the most traditional manner possible, with just two styles of doors and simple oil-rubbed-bronze pulls and knobs. The 2x8-inch tiles used for the kitchen backsplash were designed and handmade locally and finished with a custom nutmeg-tinted glaze. Most lighting, which features iridescent glass panels, alabaster shades, and low-wattage bulbs, was

**ABOVE** A copper hood with hammered details and rivets is one of many artisan-crafted details in a kitchen rich with natural materials. **RIGHT** Honey-tone fir cabinetry and a backsplash of nutmeg-color tiles combine with the crafts of numerous local artisans to create a warmly beautiful Craftsman-style kitchen that also delivers modern function.







LEFT A built-in window seat and dresser boost comfort and storage in one of the upper-level guest bedrooms that's tucked under the home's gabled roof. BELOW Built-in twin beds along a portion of the open upper-level loft function as a quiet reading spot during the day or place for youngsters to bunk at night.



custom-fabricated in the Twin Cities and integrated into the architecture. Even artwork and accessories have a decidedly Minnesotan flavor with hand-carved birds and oil paintings by Charles Beck. "This is a house of great integrity," Heide says. "The coming together of so many artisans makes a statement that homemade is good, that there is room for handmade projects in a beautiful home."

The time and attention to detail are appreciated by the homeowners and guests. After more than two years of construction, the cottage—smartly designed with a bunk-lined loft and two upper-level bedrooms in addition to the main-level master suite—now comfortably sleeps 12. Weekends are filled with horseback riding, hiking, and boating in the summer, or snowshoeing and cross-country skiing in the winter. With one of the homeowners' children next door and another only a 45-minute drive away, the cottage easily serves as a quiet retreat or as a home base for celebrations

with family and friends. In fact, the cottage has proven so popular for large gatherings that the family is designing a recreational building that will include a bunkroom and high-tech entertainment room.

Modern function is evident, but as was the case with its architectural predecessors, the cottage's careful evolution showcases the benefits of building a home the old-fashioned way—collaboratively, collectively. "There's a sense of group ownership on this project, from the general contractor to the lighting designer," Heide says. "The clients fostered a love for this project. It was an honor to be part of it." And with its modern take on traditional Craftsman aesthetics and principles, this simple family cottage is well on its way to becoming a classic. **BH**

#### RESOURCES ON PAGE 120

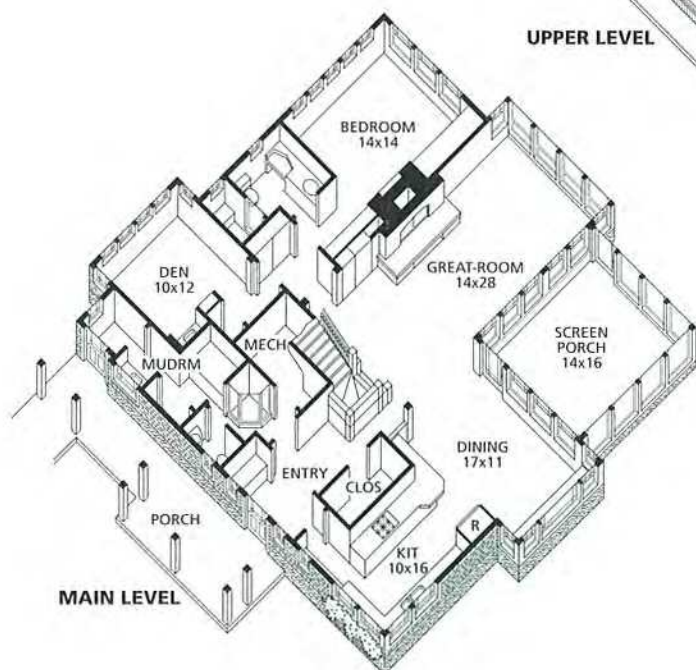
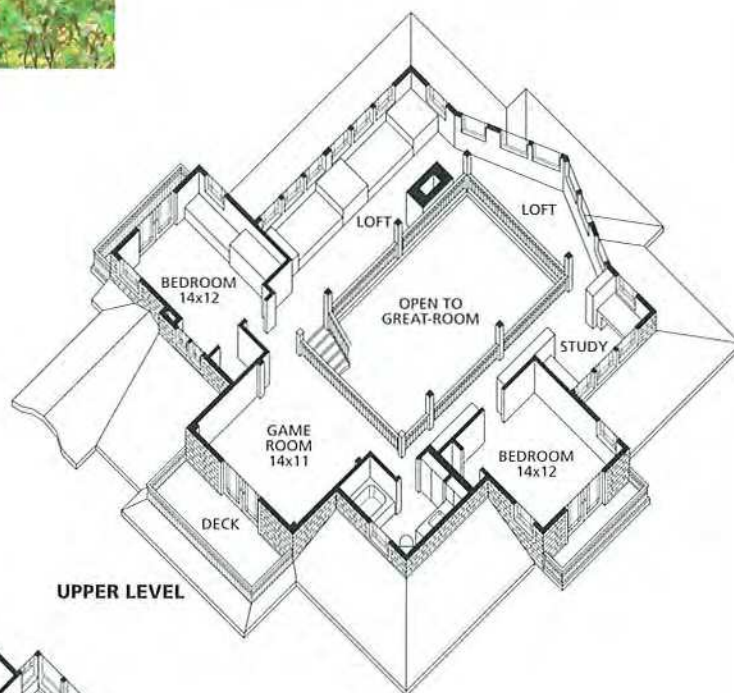
For more architectural design trends: [www.bhg.com/siptrends](http://www.bhg.com/siptrends)



## Architectural Highlights

- Lodge-inspired great-room wrapped on all sides with loft railings
- Spacious screen porch open to two rooms
- Small decks off upper-level bedrooms
- Twin beds built into loft window wall to accommodate extra guests

MAIN LEVEL SQ. FT.: 2,145  
 UPPER LEVEL SQ. FT.: 1,424  
 BEDROOMS: 3  
 BATHROOMS: 3 full



Architects **Craig Helenski and David Heide Design Studio**  
 Interior designer **David Heide Design Studio** Contractor **Tomlinson & Sons, Inc.**