



Kitchen Tour SPECTACULAR

For one weekend, tour these seventeen outstanding kitchen remodels. It's a chance to spark your imagination and check out the talents of local interior designers who are cooking up innovation.



Tour Dates and Hours:
Saturday, August 12, 10 A.M.—4 P.M.
Sunday, August 13, 10 A.M.—4 P.M.

→ Mark Nelson, Allied Member ASID, AIA

400 Groveland Ave.
#612, Minneapolis

T rue to the era in which it was built, this 1960s condo was defined by partitions and separate spaces. But with a view of downtown Minneapolis from the living room, the walls simply had to go to fully enjoy the cityscape from other areas of the home.

The kitchen, eating, and living areas were gutted to create one large room. Mark Nelson, the designer and homeowner, wanted the focus to be on the living room, so he devised the kitchen as a backdrop to the living area. "The idea was that because the kitchen was open to the other living spaces, it should have a library sort of feel, sort of sedate, with clean lines," Nelson says. The kitchen is an extension of the living room and shares the same oak parquet floor, but it is also slightly set apart by a change of scale in the ceiling (it's lower than the living room ceiling) and use of black appliances and finishes in the kitchen and off-white paint in the living area to define the space. The island triples as a workspace, buffet, and bar, all of which are conducive to the cocktails-and-hors d'oeuvres

type of entertaining Nelson prefers. "I like how the kitchen functions in that I can work at the island and watch TV or look at the city view," he says, "and it works very well for entertaining because people can sit at the bar and chat while I'm cooking."

The cherry wood cabinets were custom-designed by David Heide Design Studio, and Nelson changed all of the doors in the home to match them.

—K. W. L.

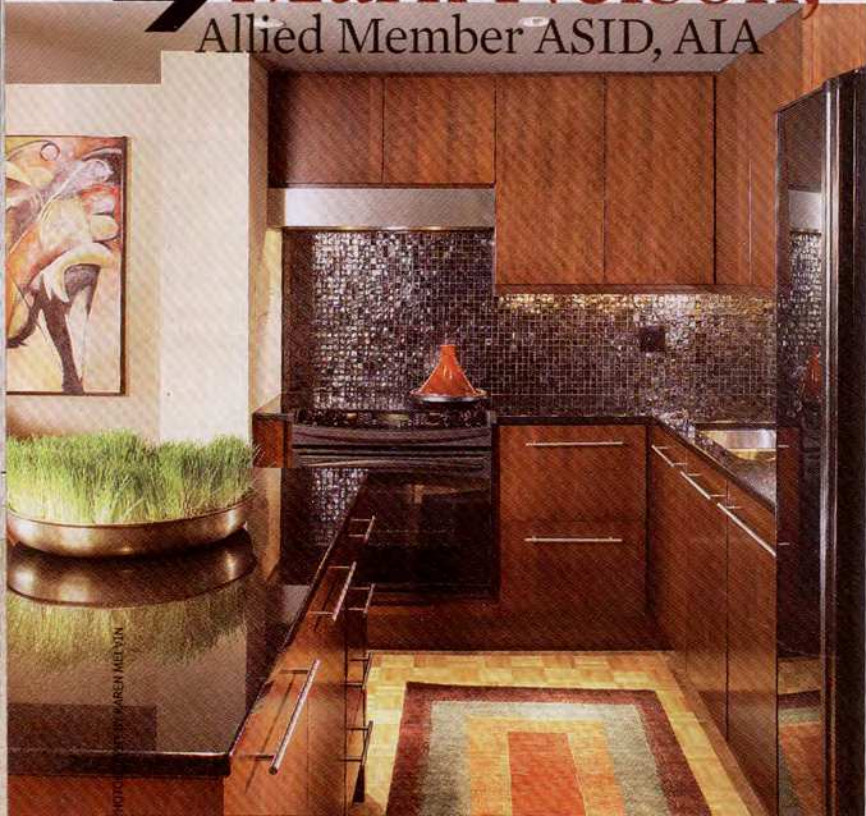
→ Resources:

Appliances: GE range and refrigerator, ASKO dishwasher

Cabinets: Custom, designed by David Heide Design Studio

Countertops: Absolute Black granite

Flooring: Oak parquet



788 Goodrich Ave.
St. Paul

→ David Heide, Allied Member ASID, Associate, AIA



Even though the previous kitchen in this home was fairly new, a remodel was necessary due to poor insulation and cramped spaces. The homeowners were doing a complete addition to the basement and first and second floors, and designer David Heide looked at the project plans to incorporate an open kitchen with adjacent breakfast area that was in keeping with the spirit of the 1880s home.

Throughout the area, painted v-groove wainscoting brings back the Old World feel, as does the Queen Anne sash-style stained glass in the window behind the sink. A modern rendition of a butler's pantry links the

kitchen and dining area, complete with a china cabinet and large walk-in food pantry. Also important to retain the 1880s feel was Heide's goal of keeping everything in scale. "Part of this project is our philosophy to create spaces that are appropriate in scale to the existing house," he says. "It's not this 1880s cottage in front with a huge great room in back. We're looking to further the aesthetic of the house in keeping with its proportion."

The end result is a compact kitchen with a clean-cut floor plan. "The traffic circulation is such that people can pass through the room from the back door and have access to the house

without disturbing the cook, who is safely protected by the island," Heide says. —K. W. L.

→ Resources:

Appliances: Wolf cooktop and wall oven, Sub-Zero refrigerator

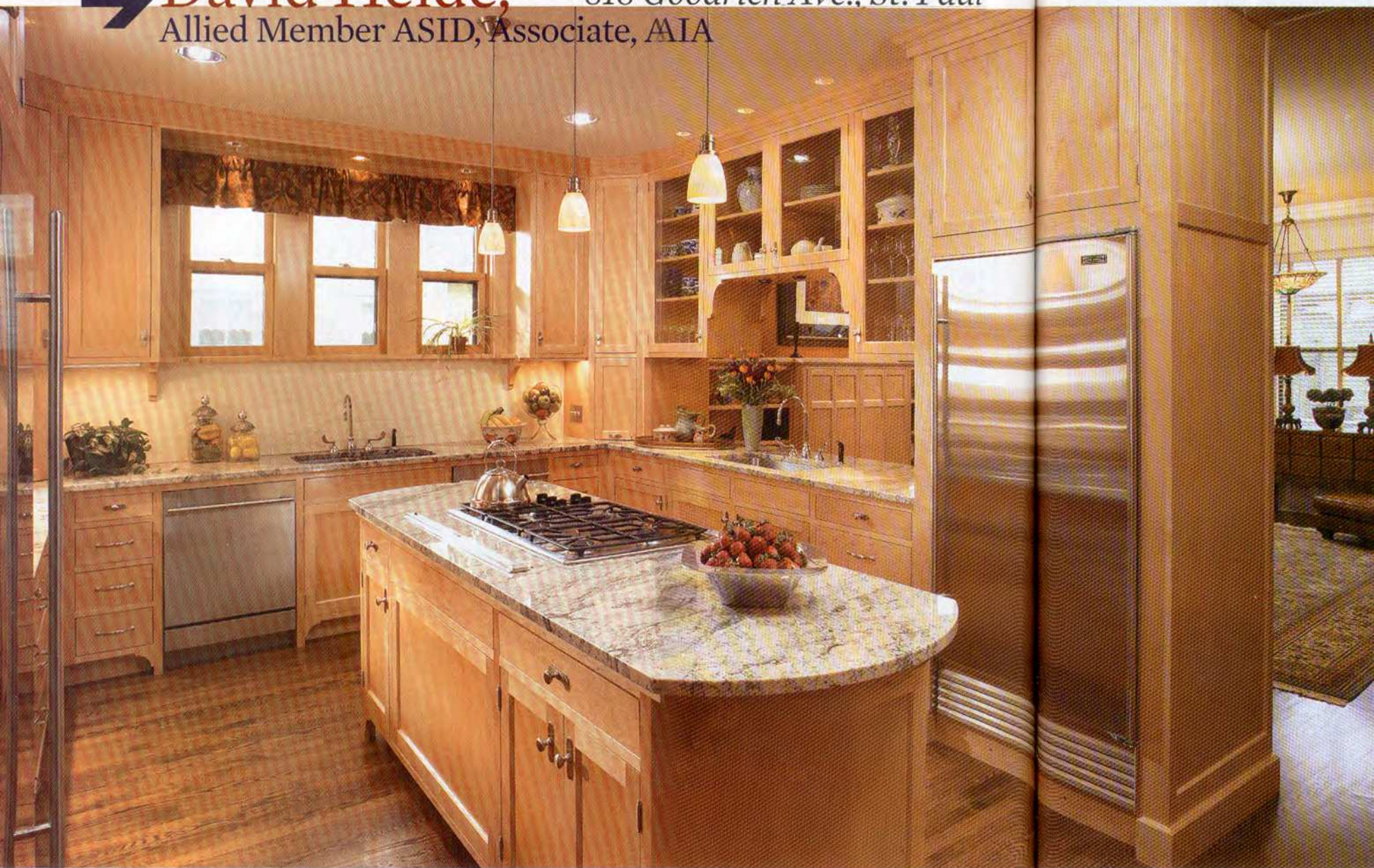
Cabinets: Custom, designed by David Heide Design Studio

Countertops: Harvest gold granite from Midwest Tile, Marble, & Granite

Flooring: Maple

Lighting: Custom, designed by David Heide Design Studio

➔ **David Heide,** 818 Goodrich Ave., St. Paul
Allied Member ASID, Associate, AIA



After many years of searching for the perfect home for their large family, the homeowners found just what they wanted in this spacious American foursquare home from the 1910s. The only problem was it desperately needed repair, so designer David Heide did a total house renovation, including a two-story addition where the kitchen is located.

To meet the needs of their busy family, the homeowners needed plenty of counter space with distinct work areas so one person could bake cookies while

another prepared lunch and yet another worked on a science fair project, Heide says. The family also sits down together for as many meals as possible, and they wanted to do so without being in the middle of the kitchen. Heide designed the space to include an informal dining area on one side and a breakfast room on the other. He views the whole space as “one big room with cabinets inserted in the middle that became the kitchen portion of a much larger room that is about fifty feet long.” The homeowners wanted a light kitchen, so Hei-

de used a fair-colored finish on the maple cabinets and chose stainless steel appliances that reflect light. He also talked the homeowners into painting the oak wainscot a cream color in the eating areas to maintain the brightness. The overhead cabinets on both sides of the kitchen have pass-through areas, which makes it easy to transport dishes between the kitchen and both dining areas. Other handy features for an active family include two dishwashers, double wall ovens, and separate full-size refrigerator and freezer. —K. W. L.

➔ **Resources:**

Appliances: Sub-Zero refrigerator, freezer; Thermador double wall ovens, cooktop; Bosch dishwashers

Cabinets: Maple, custom-designed by David Heide Design Studio

Countertops: Verdi lavras granite from Paramount Granite

Flooring: Oak wood

Lighting: Custom-designed by David Heide Design Studio