

Top of the Town

[The Best in Twin Cities Design]



From fancy to family friendly, the winners of the 2009 awards for the Minnesota Chapter of the American Society of Interior Designers (ASID) embody the best that our state has to offer. Presented in November at International Market Square in Minneapolis, the top spaces are showcased here. Enjoy! *By Shawn Gilliam*







Best in Show & First Place, *Multiple Rooms*

| Entire Residence Less Than 3,000 Square Feet |

"CITY DWELLING," Minneapolis

DESIGNERS: Michael Crull, Allied Member ASID; Anne Newman, ASID; David Heide, Allied Member ASID

FIRM: David Heide Design Studio



TRANSFORMING A LACKLUSTER FLOOR PLAN INTO AN engaging living/working environment that takes advantage of dramatic river and city views drove this condo design. From the glass bubble chandelier to the shimmering glass tile in the kitchen, many materials drew their inspiration from the water.

The floor plan suits entertaining, drawing visitors from the building's dark core to the views that wrap the space and allow sunlight to filter into the interior. Yet, the two seating areas, dining space, and kitchen all have a comfort-

able sense of plan within the open design. Not visible are the advanced lighting and audio/visual systems, including stealth speaker technology that is integrated into the finishes. The judges noted the many "clever things going on in the space," including well-planned views, both inside and out, that create focal points everywhere you look.

Photographer: Susan Gilmore. *Architect:* David Heide Design Studio.
General contractor: Shamrock Development.



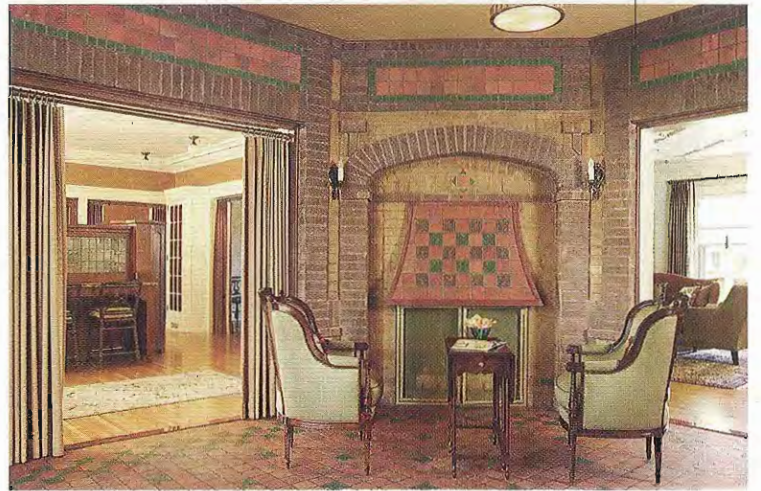
First Place, *Historic Preservation*

[Renovation]

PROJECT: "History Redefined," St. Paul

DESIGNERS: David Heide, Allied Member ASID; Maureen Haggerty, Allied Member ASID; Michael Crull, Allied Member ASID; Kimberly Kangas, Allied Member ASID

FIRM: David Heide Design Studio



WHEN THIS 1913 home was divided into condos in the 1970s, many of its original details were lost. While restoring the architectural integrity to one of the units, the designers also integrated a number of modern amenities. The formal dining room was also converted into a large cook's kitchen.

To decide on the detailing for this and other rooms, the design team studied historic building documents and photos of the home and examined other homes by the same builder. They also looked beneath the

Pro Design Tip
Look to historical documents and vintage photos for colors, finishes, and other ideas.

1970s sheetrock. Among the most dramatic discoveries was an original brick solarium that had been completely covered in sheetrock. The design team commissioned custom tile and meticulously sourced brick to match what historical finishes remained. The judges lauded the designers for their meticulous attention to detail.

Photographer: Susan Gilmore *Architect:* David Heide Design Studio,
General contractor: Dovetail Renovation.