

# This Old House

21  
smart  
curb-  
appeal  
boosts

## fresh ideas

### FOR EVERY ROOM—AND BUDGET

3 dream  
bath  
redos

4 crowd-  
pleasing  
kitchens

1 perfect  
family  
home

EASY  
(FOOLPROOF!)  
DECORATING  
IDEAS

**MORE MONEY-SAVERS!**

Best low-cost  
blogger projects

Grow a glorious  
garden—for pennies

MARCH 2014  
THISOLDHOUSE.COM

\$4.99US \$5.99CAN



03>

0 70989 10160 9

# Same space, more storage

New cabinets and a smart layout take this vintage space into the 21st century BY CAROLE BRADEN + PHOTOGRAPHS BY CHAD HOLDER

→ **CUPBOARDS** and drawers were what Molly Dinneen craved. An inviting style and reliable appliances were also missing from the kitchen of her 1925 Minneapolis foursquare, but the limited mishmash of original and 1980s near-match cabinets was what really got to her. Turning to the David Heide Design Studio, she asked for a bright, functional space with a place for everything. She could do without an island, but she did want granite countertops, stainless-steel appliances, and a roomy apron sink. And did we mention more storage?

Designer Chris Christofferson freed up an empty wall for cabinets by moving a poorly placed opening. Then he rearranged the layout, working with Molly, who served as the general contractor. It was a challenge to juggle bids, schedules, and deliveries, she says, and the work stretched to nine months, but she has no regrets. "Usually the newness of something wears off, but every time I walk in there I smile," she says. As for storage, "I even have a few drawers with absolutely nothing in them."

**BEFORE** Dated cabinets and appliances (no dishwasher) and an illogical layout hampered productivity. **AFTER** New spots for the range and sink, capacious cabinets, and lots of counter space provide fresh style and function. *Paint (cabinets): Benjamin Moore's Hepplewhite Ivory*



• before + after:  
kitchen

Decorative vent cutouts add detail and allow radiator heat to circulate. Furniture-like feet add to the period feel. Sink and faucet: Rohl. Dishwasher: Miele

Homeowner Molly Dinneen pauses at the new opening, which was relocated and redesigned to blend with the Craftsman dining room. Rug: West Elm

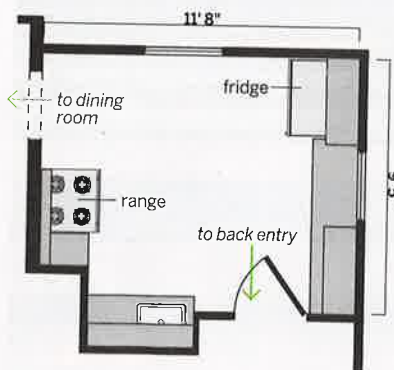


after

Shifting an opening 20 inches allowed for a more functional layout in the same footprint plus more storage and prep space.

before

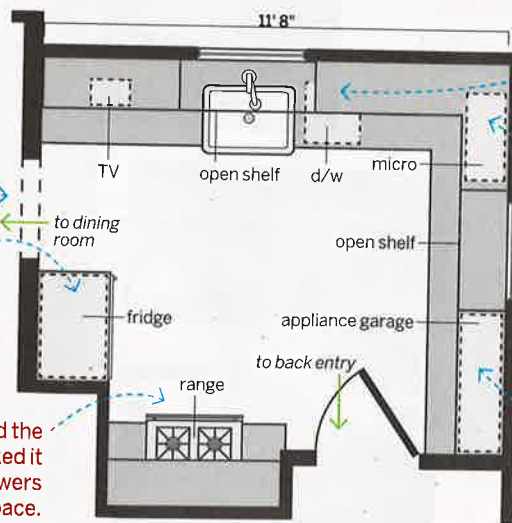
The 110-square-foot space held a disjointed array of old cabinets and appliances.



1] Centered the opening, which allowed cabinets to go up on the adjacent wall.

2] Moved the fridge to the range's old spot and added upper cabinets.

3] Relocated the range and flanked it with utensil drawers and prep space.



4] Created a cleanup zone under the window and lined the wall with storage.

5] Wrapped more cabinets and prep space around the wall where the fridge had stood.

6] Incorporated a clutter-reducing appliance garage under a pantry cabinet.

Simple flat casing matches the original trim and mimics the wainscot cap in the adjacent dining room. Scaled-down tile makes the room feel larger.



Red glass knobs add a shot of color and contrast with the brushed-nickel pulls, flagging the mix of old and new. *Knobs: House of Antique Hardware*

Light-channeling reeded glass replaces the center panel in the door to the back entry. *Door inset: GlassArt Design, Pulls: Rejuvenation*



**SHARE YOUR REMODEL**

Enter your redo in our America's Best Remodel Contest for a chance to win cash prizes. Blipp this page or go to [thisoldhouse.com/yourTOH](http://thisoldhouse.com/yourTOH)

A slide-out chopping board hovers near the sink and over a cabinet pullout with bins for trash and recycling. *Countertops: Capital Granite. Microwave: GE*



**pro advice** CHRIS CHRISTOFFERSON, KITCHEN DESIGNER

**“By extending the subway-tile backsplashes down to the baseboard around the stove and refrigerator, we gave the kitchen a fully tiled feel at a minimal cost.”**

